

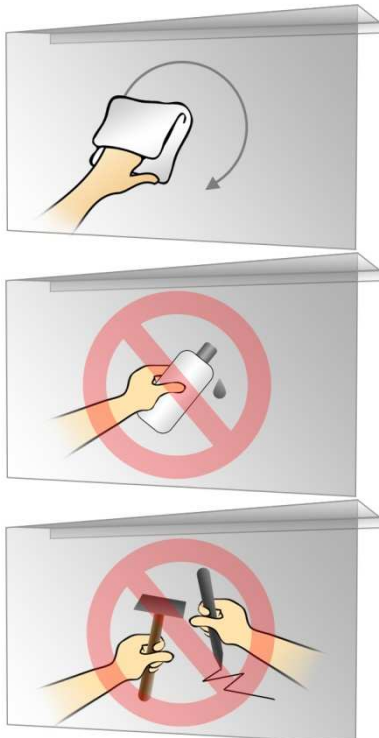
▼ Installation Instructions - ViewGuard™ Anti-Glare LCD/Plasma TV Filter



1. Hang your ViewGuard™ Anti-Glare LCD/Plasma TV Filter over the front of your television so that the filter is flat against the plastic framing of your TV. For a more secure fit you may carefully remove the transparent, anti-skid pads from the front side of the ViewGuard™ Anti-Glare LCD/Plasma TV Filter and attach the included Velcro squares in their place.

2. Adjust the position of your ViewGuard™ Anti-Glare LCD/Plasma TV Filter so that it is centered on your TV. If the ViewGuard™ Anti-Glare LCD/Plasma TV Filter interferes with the power button of the TV, you may adjust its position.

▼ Maintenance & Care



If the surface of your ViewGuard™ Anti-Glare LCD/Plasma TV Filter is dusty or dirty, please use the enclosed cleaning cloth to wipe the surface from inside out in a clockwise direction. If needed, please use ViewGuard™ Anti-Static, Alcohol-Free LCD Screen Cleaner to clean your filter.

Please refrain from using organic solvents, alcohol or benzene on your ViewGuard™ Anti-Glare LCD/Plasma TV Filter in order to avoid damage.

Please refrain from scratching your ViewGuard™ Anti-Glare LCD/Plasma TV Filter.